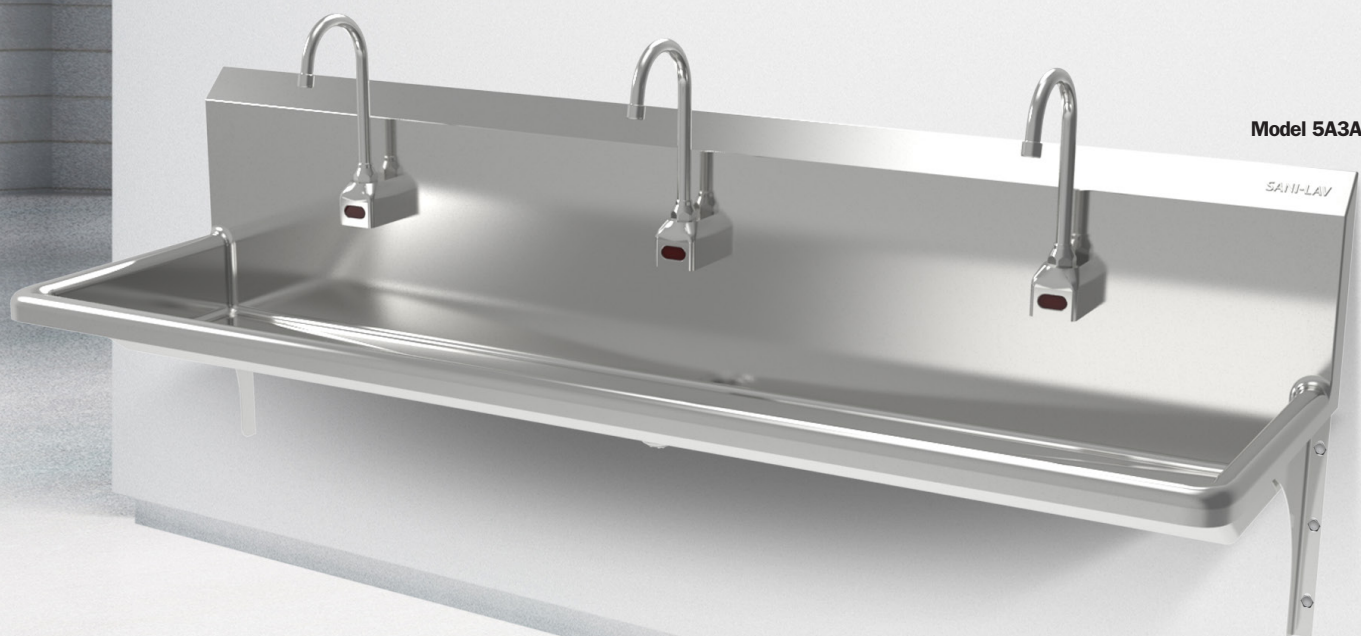


# ADA Compliant Wash Stations

Accessible design without compromising performance.



Our ADA Compliant Wash Stations are designed to provide convenient hand washing access while maintaining the durability, sanitation, and performance demanded in commercial and industrial environments. Built from high-quality stainless steel, these wash stations are engineered to help meet accessibility requirements while supporting hygiene initiatives across food processing, healthcare, institutional, and commercial facilities.

## Designed for Accessibility. Built for Durability.

- ADA compliant design for improved accessibility and user comfort
- Open wall-mounted design allowing wheelchair access and knee clearance
- Stainless steel construction for corrosion resistance and long service life
- Hands-free and sensor faucet options available to reduce touch points
- Multiple station configurations available for varying facility requirements
- NSF certified and low-lead compliant

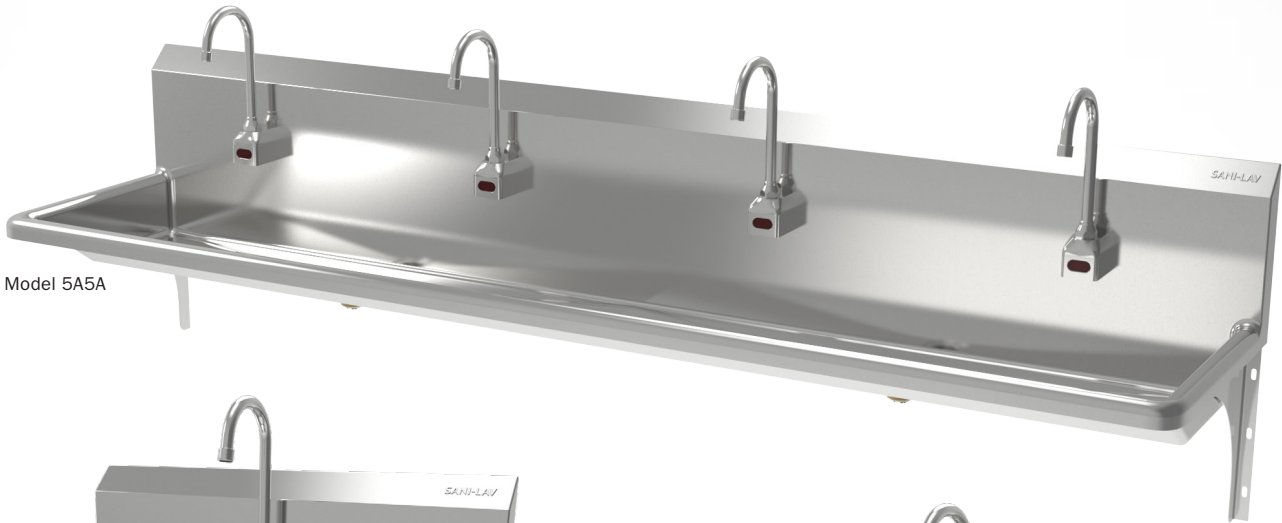


# ADA Compliant Wash Stations

Universal Features									
Manual Faucet	AC Sensor Faucet	Battery Sensor Faucet	Without Faucet	Without Faucet	Number of Stations	Overall Dimensions	Inside Bowl Dimensions	Back Splash Height	Gauge
<b>Models</b>									
5A1F	5A1A	5A1B	5A10	5A18	1	30" x 20" x 15"	27" x 16.5" x 5" deep	10"	16
5A2F	5A2A	5A2B	5A20	5A28	2	48" x 20" x 15"	45" x 16.5" x 5" deep	10"	16
5A3F	5A3A	5A3B	5A30	5A38	3	68" x 20" x 15"	65" x 16.5" x 5" deep	10"	16
5A5F	5A5A	5A5B	5A50	5A58	4	88" x 20" x 15"	85" x 16.5" x 5" deep	10"	16

**Product Compliance** – NSF/ANSI 2 Food Equipment, NSF/ANSI 372 Lead-Free Compliant, ASME A112.18.1

Meets ADA wheelchair accessibility requirements when installed in accordance with ADA guidelines.



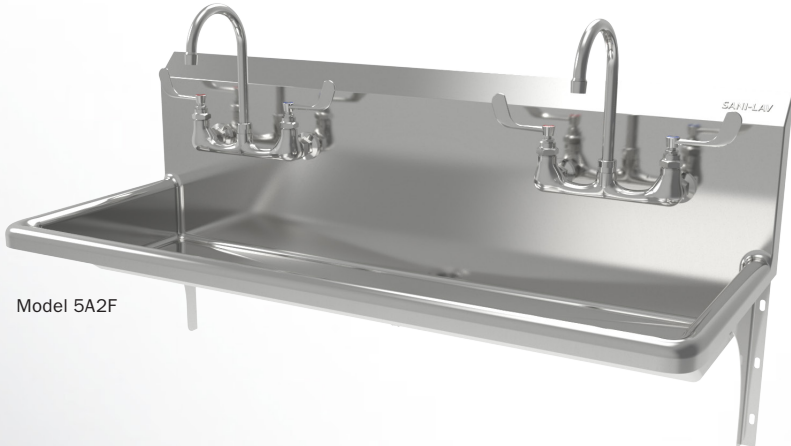
Model 5A5A



Model 5A1B



Model 5A1F



Model 5A2F

