

# SANI-LAV<sup>®</sup> COLUMBIA PRODUCTS

## Ergonomic Spray Nozzle NP1 Series



Model NP1  
Model NP1X



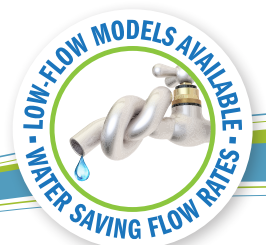
Model NP1B  
Model NP1BX



Model NP1W  
Model NP1WX



Model NP1R  
Model NP1RX



### NP1 Series Universal Features

- Heavy-duty stainless steel body with stainless steel components
- Insulated cover with yellow arrow directions
- Safety shut off trigger when released
- 3/4" GHT inlet allows direct hose connection
- Stainless Steel Swivel Hose Adapter (Included)
- Replacement parts available
- Maximum operating temperature: 200°F/93°C
- Maximum working pressure 150 psi
- Weight 1.6 lbs.
- Dimensions: L 5.91" x H 6.97" x W 1.88"

### Models

Color	Standard	Low-Flow
Safety Orange	NP1	NP1X
Black	NP1B	NP1BX
White	NP1W	NP1WX
Red	NP1R	NP1RX

### Quick Specs

Max Temperature	200°F/93°C
Max Pressure	150 psi
Inlet	3/4" Female GHT
Tip	Not Threaded
Body Material	Stainless Steel
Handle Type	Stainless Steel
Weight	1.6 lbs.
Hose Adapter	SS Swivel - 3/4" GHT, 3/4" Hose Barb
Dimensions	L 5.91" x H 6.97" x W 1.88"

### Water Flow Rate Comparison

PSI	Standard GPM	Low-Flow GPM	Water Saving
30	3.3	2.4	27.27%
40	4.2	2.9	30.95%
50	4.9	3.1	36.73%
60	5.4	3.5	35.19%
70	5.9	3.7	37.29%
80	6.1	3.8	37.70%
90	6.2	3.9	37.10%
100	6.7	4.0	40.30%



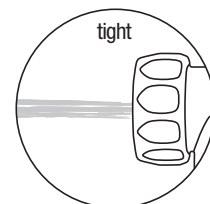
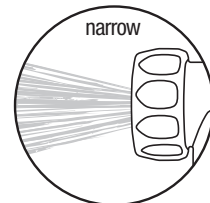
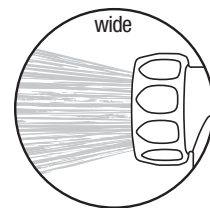
N20S Swivel Hose Adapter (Included)

.75" GHT Female



All Models include N20S Swivel 3/4" GHT, 3/4" hose barb

Variable Spray Nozzle

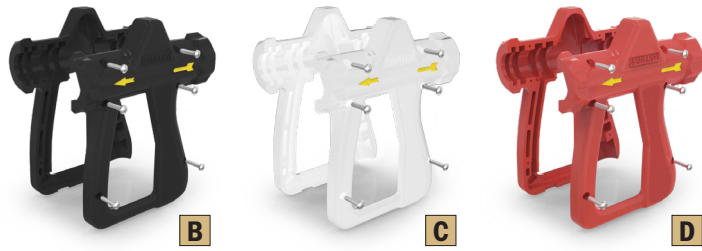


Trigger lever controls variable spray pattern

**NP1 Replacement Parts**

Description	Part Number
Orange Insolated Cover	<b>A</b> NP1OC
Black Insolated Cover	<b>B</b> NP1BC
White Insolated Cover	<b>C</b> NP1WC
Red Insolated Cover	<b>D</b> NP1RC
Barrel Assembly Replacement Kit	<b>G</b> N8BR
Barrel Assembly Replacement Kit	<b>H</b> NP1BRX

Replacement Covers



**A** Replacement Cover

- E** Barrel Assembly Replacement Kit (Standard)  
Stainless Steel Body, Viton Inlet Washer
- F** Barrel Assembly Replacement Kit (Low-flow)  
Stainless Steel Body, Viton Inlet Washer

