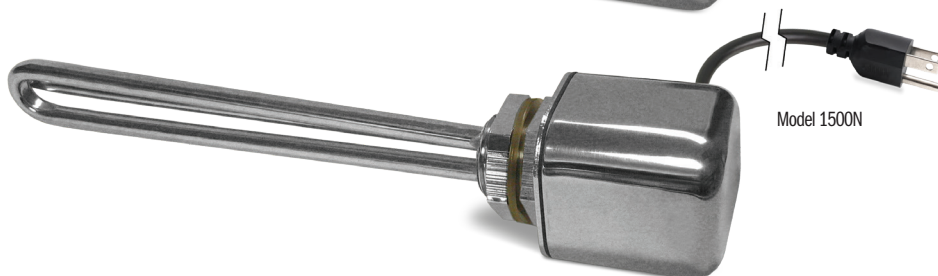
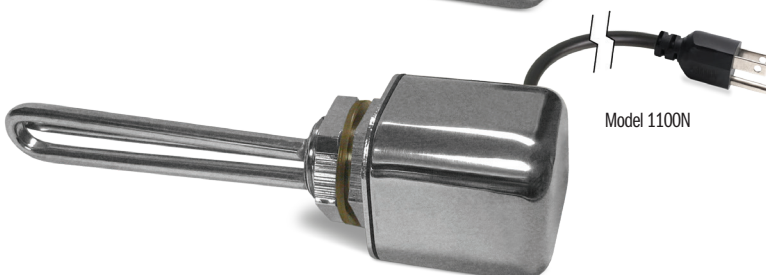
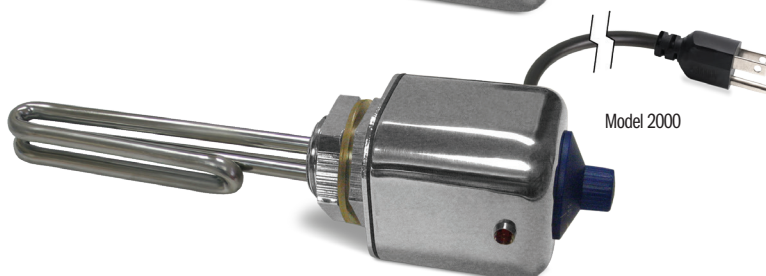
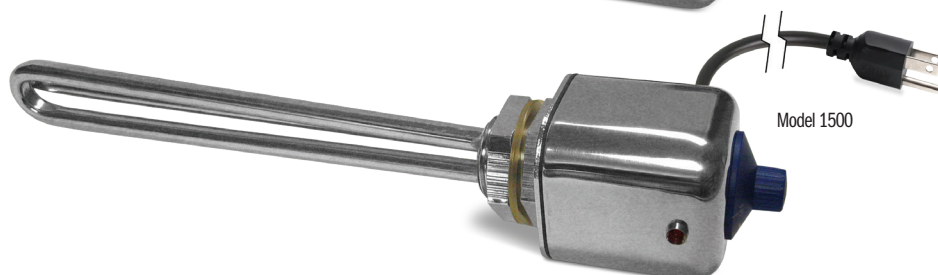
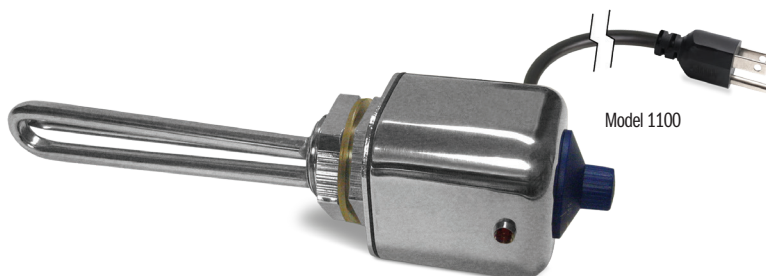


SANI-LAV[®] COLUMBIA PRODUCTS

Operating Manual for Heating Elements

Models 1100, 1500, 2000, 1100N and 1500N



All models have type 304 stainless steel enclosures and heating element rods. Models 1100, 1500 and 2000 have an adjustable dial that allows the user to increase the temperature setting by turning the dial clockwise and an on/off light indicator shows when the unit is heating.

All models have a 6', 3 wire grounded cord and plug and a 1" standard NPT male thread for through-the-side tank installation in knife sterilizers with 1" NPT threaded female flange.

These models also come with a stainless steel nut and rubber washer for installation in knife sterilizers with a 1.25" hole.

Installation Instructions

Knife Sterilizers with a 1" NPT threaded female flange:

1. Remove the jam nut and rubber gasket (Illustration A).
2. Install pipe tape on threads (Illustration B).
3. Screw the heating element into the 1" NPT flange until tight (Illustration C).
4. Fill box with water before turning unit on.

Knife Sterilizers with a 1.25" hole only:

1. Remove the jam nut only, leaving the rubber gasket in place (Illustration D).
2. Insert the heating element through the 1.25" opening (Illustration E).
3. Reinstall the jam nut (Illustration F).
4. Tighten the jam nut securely.
5. Fill box with water before turning unit on.

Caution: Heating Elements must be fully submerged at all times. Low liquid level will cause burn-out. Do not immerse or spray box, these units are not water proof.



Illustration A

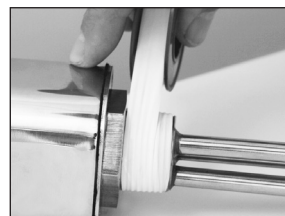


Illustration B

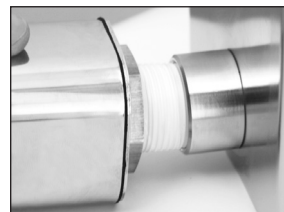


Illustration C



Illustration D

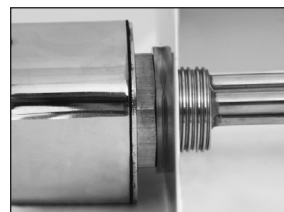


Illustration E

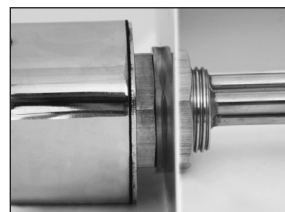
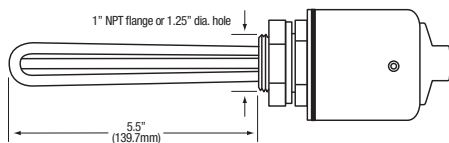


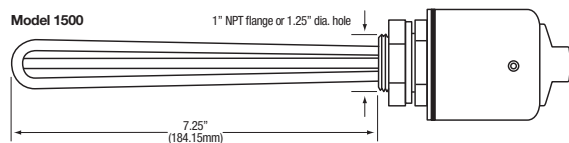
Illustration F

■ Top

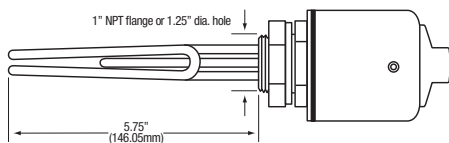
Model 1100



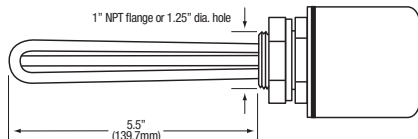
Model 1500



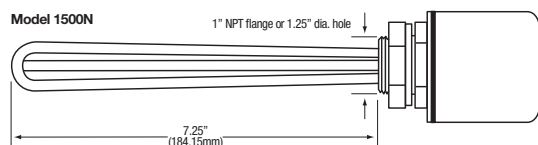
Model 2000



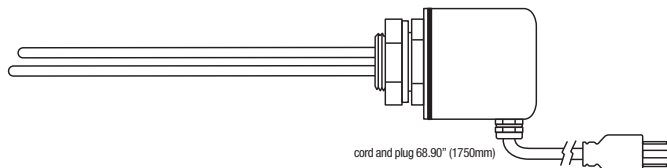
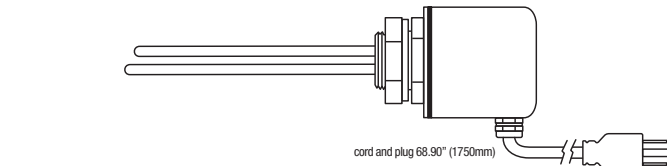
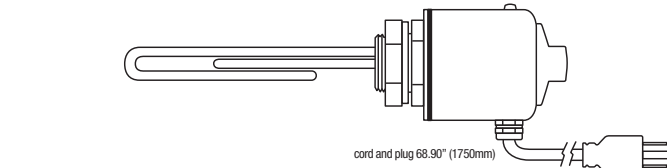
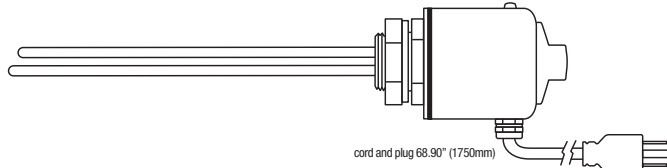
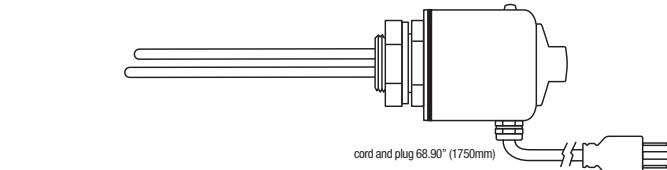
Model 1100N



Model 1500N



■ Side



■ End

