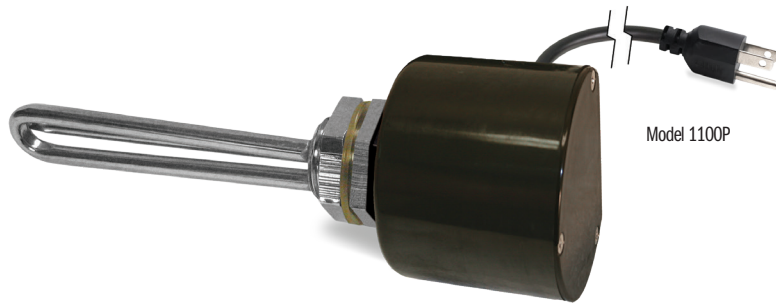
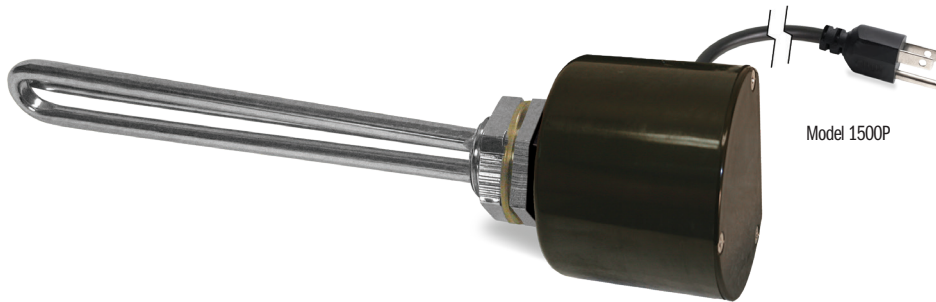


# SANI-LAV<sup>®</sup> COLUMBIA PRODUCTS

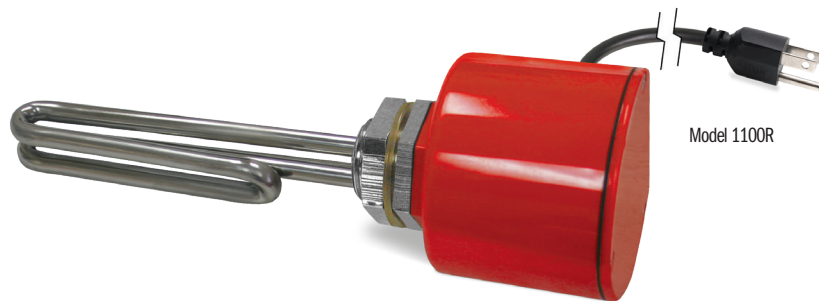
## Operating Manual for Heating Elements Models 1100P, 1500P, 1100R and 2000R



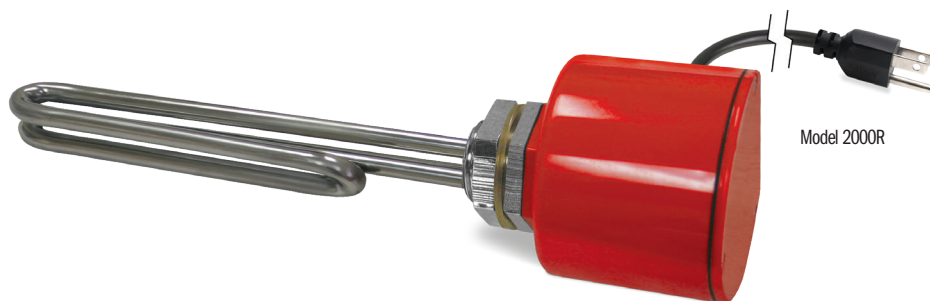
Model 1100P



Model 1500P



Model 1100R



Model 2000R

All models have plastic enclosures and heating element rods.

All models have a 6', 3 wire grounded cord and plug and a 1" standard NPT male thread for through-the-side tank installation in knife sterilizers with 1" NPT threaded female flange.

These models also come with a stainless steel nut and rubber washer for installation in knife sterilizers with a 1.25" hole.

## Installation Instructions

### Knife Sterilizers with a 1" NPT threaded female flange:

1. Remove the jam nut and rubber gasket (Illustration A).
2. Install pipe tape on threads (Illustration B).
3. Screw the heating element into the 1" NPT flange until tight (Illustration C).
4. Fill box with water before turning unit on.

### Knife Sterilizers with a 1.25" hole only:

1. Remove the jam nut only, leaving the rubber gasket in place (Illustration D).
2. Insert the heating element through the 1.25" opening (Illustration E).
3. Reinstall the jam nut (Illustration F).
4. Tighten the jam nut securely.
5. Fill box with water before turning unit on.

**Caution:** Heating Elements must be fully submerged at all times. Low liquid level will cause burn-out. Do not immerse or spray box, these units are not water proof.



Illustration A



Illustration B



Illustration C



Illustration D



Illustration E

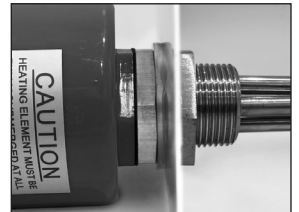
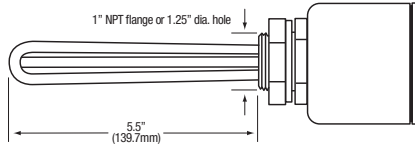


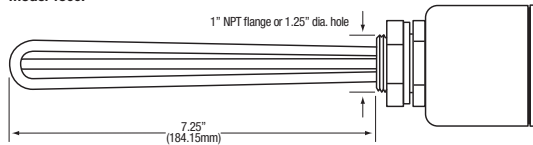
Illustration F

#### ■ Top

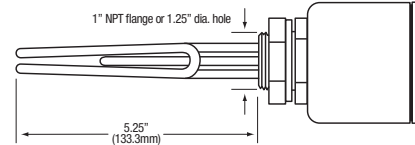
##### Model 1100P



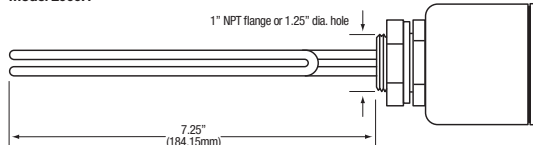
##### Model 1500P



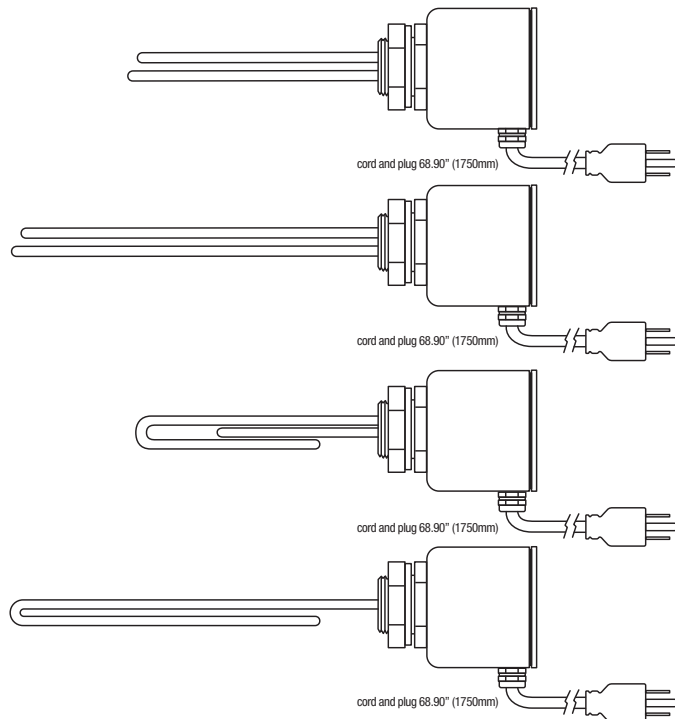
##### Model 1100R



##### Model 2000R



#### ■ Side



#### ■ End

